



# The Presbyter

The First Presbyterian Church of Clarks Summit

## Loving our neighbors - in specific ways

*Informational meeting to begin the planning process*

**Sunday, September 25** is half a year away, but we already know it will be a big day for our congregation. This will be our first-ever **Worship Through Service Day**, and it will be full of service projects that our church will do throughout our community.

Our Mission and Justice committee is leading the effort, having heard about a similar project at the Church of Christ Uniting in Kingston. They have invited Carol Fleming, the church's pastor, to come and tell stories of how the program has worked for them. You are invited to this informational meeting on **April 4 at 5:45 p.m. in our Fellowship Hall**. Let's get a large group of us together to learn and begin to plan for the fall.

Old Forge pizza will be provided for dinner. We need to know you are coming so we have sufficient food on hand. To let us know, call the church office (586-6306), or sign the ***Intend to Attend*** list in the church Narthex, or send an email to [office@fpccs.org](mailto:office@fpccs.org).

We hope to see you there!



*Our next Arts at First Presbyterian event*

### Al Hamme's Swing Street Jazztet

4:00 p.m. Sunday, April 17

We swing into spring as we welcome saxophonist Al Hamme and his eight piece band, the Swing Street Jazztet. It's a fabulous free concert for the community, and we hope you will attend.

Al is a virtuoso woodwind artist and retired college music professor. His musical connections reads like a "who's who" of the jazz world. Don't miss this very special afternoon of music!



Front row (l to r): Al Hamme, Jeff Stockham;  
Back row, Bill Carter, Tony Marino, Mike Carbone, Tom Whaley

### Table of Contents

Page 2	- Notes from Session, Financial Info, Per Capita
Page 3	- From The Pastor
Page 4	- Fellowship Committee News
Page 5	- Mission and Justice News
Page 6	- The Way
Page 7	- Choir Notes, Youth Fellowship, Helpers Needed
Page 8	- Book Review, Spring Bike Trip, State Hospital Luncheon, Stephen Ministry, Flower Calendar, Archives, Lending Library
Page 9	- Kids Page
Page 10	- Joys & Sorrows, Lectionary Readings, Ushers, Welcomers
Page 11	- Calendar
Page 12	- Food Pantry, Camp Lackawanna

**Notes from the Session Meeting on March 1, 2016**

1. Session would like to thank everyone for their help and support of the Ice Festival held on February 27th. It was a great effort from a lot of people.
2. Session would also like to thank Steuart Bailey for the church attendance reports he supplies to Session. Steuart prepares weekly, monthly and yearly totals. We are grateful for his work for us.
3. Please remember to stay for the congregational meeting on Sunday, April 3rd to elect elders and deacons. It will take place at 11:00 a.m. in the sanctuary.



**The Presbyterian deadline for  
The May issue is  
April 15, 2016**

The Presbyter is a monthly newsletter of the First Presbyterian Church, 300 School Street, Clarks Summit, PA 18411.

All visitors are welcome to worship with us. **Worship services are held on Sunday mornings at 10:00 a.m.** Child care is available. Communion is observed the first Sunday of every month.

If you do not attend a church in this area, we invite you to any and all of the events, programs, and worship services described in this newsletter. Please call the church office to arrange child care. Our sanctuary and Fellowship Hall are both handicapped accessible.

<b>Church Office</b>	<b>(570) 586-6306</b>
<b>Fax</b>	<b>(570) 587-3784</b>
<b>Web Page</b>	<b>www.fpccs.org</b>
<b>Pastor</b>	William G. Carter
<b>Administrative Assistant</b>	Nancy Owens
<b>Treasurer</b>	Wayne Griffiths
<b>Editor</b>	Lindsey Hardy
<b>Clerk of Session</b>	Beverly Bright
<b>Director of Music</b>	Frank Jones
<b>Director of Bells</b>	Richard Cochrane
<b>Director of Chapel Choir</b>	Kay Ten Eyck
<b>Organist</b>	Kay Ten Eyck
<b>Sexton</b>	John Conklin

**FINANCIAL INFORMATION  
FROM YOUR FINANCE COMMITTEE  
FOR THE MONTH ENDING FEBRUARY 29, 2016**

REVENUE

Budget	\$ 58,900
Actual Received	<u>64,584</u>
Difference	\$ 5,684
	=====

EXPENSES

Budget	\$ 58,734
Actual Expenses	<u>60,002</u>
Difference	\$ (1,268)
	=====

BUDGET VARIANCE \$ 4,416

PLEDGE INCOME

Budget	\$ 53,333
Received	<u>53,379</u>
Difference	\$ 46

Per Capita 2016 is \$32.00 per member.  
Total Received to date - \$2,987



**HIS NAME ALONE IS  
EXALTED.  
PSALM 148:13**



## From the Pastor

William G. Carter

Easter has come, and we are left with the aftershocks of resurrection. It is astonishing news that Christ is risen from the dead, the “first fruits” of the promise of resurrection for us all. We can ground our future in the hope that Christ will take us by his side, and that life is indeed eternal.

This became poignant for me when I heard the news that Ann Weems died in Saint Louis. Ann was a Presbyterian elder who preached better than most preachers. Ann’s primary vehicle was her poetry. Her books are on my shelves, and on the shelves of many church libraries. By all accounts, her funeral was a tearful celebration, a time to give thanks to God for her life, a moment to affirm the ongoing love of God. She left behind an unpublished poem as a final gift to be shared with the church, which was read at the service:

*When you hear of my demise  
Don't believe a word of it!  
Our God is the God of the living  
And I am living still!  
If it were not so  
He would have told us!*

*Don't believe a word of it!  
And whatever you do  
Please please please  
Don't eulogize me!*

*Gather instead for worship!  
To celebrate God  
Who gives each of us Life Abundant!*

*Turn mourning into morning  
Turn tears into laughter!  
Turn sadness into joy!  
Turn somberness into celebration!*

*Remembering that Jesus is  
The way, the truth, the life.  
Gather to celebrate life with scripture and prayer  
With jazz band with choirs, with pipers with dancing  
Follow with faithfulness the life you have been given!*

*I left this earth in Alleluias  
Dancing with the angels of life  
Among the stars of God.*

Now that is what Easter hope sounds like! Claim it for yourself, in the strong love of Jesus Christ.

Rev. Bill

## Board of Deacons

### Care Team Ministry Coordinators are:

Independent & Assisted Living: Sara Ann Hosier 587-0371  
 Deacon Meals: Donna Kepler 587-2729  
 Time of Loss: Ginny O'Brien 587-8149; Betty Keen 587-0217  
 Emergency Home Repair/ Joe Waters 586-7233  
 Maintenance: Greg Matthews 587-2644

Please let the Board of Deacons Care Team Coordinators or the church office know if anyone is in need of care.

We're here to care for FPC members and friends and we count on all of you to let us know when help is needed. This is our ministry and our Christian privilege to care for you.



## PROFESSIONALS DAY

*Wednesday, April, 27*



## FELLOWSHIP COMMITTEE



The Fellowship Committee has some great activities coming up. We hope you will be able to join us.

April 10, 2016. Mark your calendar for another opportunity to get together to spend some time enjoying great company and good food after church. Bring a dish to share. There is no special event going on, we just want to get together. Hope to see you there.

There is a NEPA Church Softball League. This is designed to be an activity to bring men together for a time of fellowship and fun. It will run from May through August. If there are at least 5-7 men interested but not enough to field a full team, you can participate and will be joined with another group to form a team. Let Judy Cutler know if you are interested and if there are enough, more information will be provided.



## MISSION AND JUSTICE

We would like to thank the congregation for their generous support of One Great Hour of Sharing. Your contributions make a difference here and around the world for disaster assistance, hunger programs, and self development. Thank you.

\*\*\*\*\*

As mentioned on the front page, our Session and Deacons are planning a day of several community service projects that can be completed by all members of our congregation. It is scheduled for Sunday, September 25, 2016. We are calling it, "Worship Through Service Day."

A similar program exists at Church of Christ Uniting in Kingston, called "Church Without Walls."

On **April 4 at 5:45 p.m.**, there will be an informational meeting in Fellowship Hall for anyone interested in learning more about Worship Through Service Day. The Reverend Dr. Carol Fleming from Kingston will be the guest speaker. Pizza will be served. Please sign the **Intend to Attend** list in the Narthex so we know how much pizza to order.

### Dobson Scholarship

If you are a graduating high-school senior member of our church who plans to further his/her education, you are encouraged to apply. The Application can be downloaded from the church's website and must be received in the office by May 15th.

### Earth Care News

#### **Table Talk- April 24th Food Waste- From Farm to Fork**

In response to Earth Day, we will be looking at the huge impact of unused and discarded food. Here is some introductory information. North American Food Waste Facts (from UNEP- United Nations Environment Programme).

In the USA, organic waste is the second highest component of landfills, which are the largest source of methane emissions. In the USA, 30-40% of the food supply is wasted, equaling more than 20 pounds of food per person per month.

\*\*\*\*\*



#### **Highway Clean-up**

Our next First Presbyterian Adopt-a-Highway clean-up will be Saturday, April 9<sup>th</sup>. We will meet in the parking lot of Clarks Summit Methodist Church at 9AM. Clean-ups usually only take a little over an hour, and all adults are welcome. Future dates for road pick-ups are the second Saturday of June, September, and November.





## THE W.A.Y.

The Wednesday Addults and Youth Christian Education

“I am the WAY, the TRUTH, and the LIFE”

Supper, 5:00 \* Classes for all ages, 6:15

**Spark (Newborn - 3 year old)** enjoy Bible stories, songs and games in the nursery. Stories this month are the Great Commission, Doubting Thomas, the Ascension, and the Holy Spirit.

**Power Xpress (4 year old - Grade 5)** participate in one combined classroom and experience Bible stories through interactive classes. In April we will tell the stories of Easter, Pentecost, and the spread of the early church through Peter and Cornelius.

**We Believe: With All Boldness and Freedom (Grades 6-8)** Room 209. Students are working through the New Testament to gain the overall picture of the life of Jesus and the early church. This month we will learn about the growth of the early church.

**PresbyYouth (Grades 9-12 and college-age adults)** are encouraged to either join an adult class or participate in the middle school class.

**Adults** will have two classes during the month of April. Dr. Charlie Pinches leads his popular weekly study in Room 210. It's called “**Highlights in the Bible**” for adults and teens. He says, “The class is open to all who want to brush up on the Bible and keep their stories straight.”

**Rev. Bill Carter** will lead a class on “**Living the Psalms**” in Room 206. The group will explore the treasury of poetic prayers and hymns at the center of the Bible as a resource for our own faith and life. It will tie in to the weekly sermon series that he will offer for the next six weeks. We will study and pray the “psalm of the week” before we hear a sermon about it.

Come and learn with us. You are welcome to join our classes at any time.

**Christian Education is an important part of who we are and what we do...and we need YOU to make it happen. How? You can enrich your own faith and help our church grow in Christ by:**

- ◆ Attending the W.A.Y. for dinner, classes, and choirs...we want to see you here!
- ◆ Bringing a friend...new faces are always welcome.
- ◆ Volunteering to teach...at any grade level for any amount of time, you can help our children and adults learn and grow. Please prayerfully consider helping with this important ministry.
- ◆ Helping to set up for, cook, and serve our weekly meal...our church family loves to eat.
- ◆ Joining the CE committee...our group meets the first Thursday of each month to plan the W.A.Y., youth group, special events, and more — we're always looking to hear from new voices.

## Wednesday Supper Reservations



**Light Supper** is served before The Way classes from 5:00-6:10 for those with **reservations**.  
Suggested donation: \$3 per person.

Please make reservations no later than **Monday**. Slips can be placed in the **basket near the phone in the kitchen** or in the **offering plate**. You may also **call the church office** to make reservations.



**Chapel Choir Notes**

submitted by Kay Ten Eyck



Spring has sprung and we are on the run!

Our April 17th anthem talks about listening to our Shepherd's voice. Even when our lives are busy, we need to make sure we stop and hear what our Shepherd is saying.



Along with singing for worship, we have plans to go bowling in April. We enjoy each others company and will be happy to spend some time just being with each other!

May will find us singing for Mother's Day. Our last event for the spring will be our annual trip to Hershey for Music in the Parks on Saturday, June 4th.

Would you like to sing or ring? Talk to one of the directors; we'd love to have you join us!

- Chapel Choir ~ Kay Ten Eyck, Director ~ rehearses Wednesday evenings 5:30 to 6:10 ~ sings about once a month
- Adult Choir ~ Frank Jones, Director ~ rehearses Wednesday evenings 7:15 to 8:25 ~ sings about three times a month
- Bell Choir ~ Richard Cochrane, Director ~ rehearses Wednesday evenings 8:30 to 9:15 ~ rings about once a month



**Youth Fellowship**

All youth grades 4-12 are invited to join us on the following dates:

**Friday, April 8 *Cosmic Bowling***  
8:15-10:15PM  
Cost: \$10

**Friday, April 22 *Iron Chef***  
6:30-8:30PM

Bring a friend! New faces always welcome.

**Helpers Needed!**

The W.A.Y. is looking for people to help with our meals. You are welcome to help once in a while, once a month, or whenever you are able!

**You can help by:**

- Cooking or helping to cook a main dish
- Providing a salad
- Providing a dessert
- Helping with setup
- Helping with cleanup

If you can contribute, please contact Jana Schillinger or any member of CE committee.





April will find us at Judy Cutler's home on April 28th at 7:00. The book is to be determined but is sure to be good. Contact Judy for more information if you would like to join us.



Come join us for our annual bike ride down the Lehigh Gorge Rail Trail.

This year we will ride on June 11, so mark your calendar. We will meet in White Haven, ride 26 miles downhill to Jim Thorpe, enjoy lunch, shopping, and sightseeing, and ride the shuttle back to White Haven.

Cost is about \$40.00 for the shuttle. Rentals are available. Contact Dick or Marie Cochrane at 570-587-3970 for additional details.



### STATE HOSPITAL UNCHEON April 5<sup>th</sup>, Noon

Join us for lunch and fellowship with our guests in Fellowship Hall. You do not have to be a circle member to come and Men are always welcome.

Presbyterian Women



A Stephen Minister comes alongside a hurting person and meets with that person on a weekly basis to listen, care, encourage, pray, and provide emotional and spiritual support. Men are paired with men; women with women.

Over the years, well over one-and-a-half million people have benefited from the one-to-one, Christ-centered care of a Stephen Minister. This care is entirely confidential — no one knows the identity of a care receiver except for his or her Stephen Minister and the pastor or Stephen Leader who paired the two together. If you would like to hear some stories from care receivers, check out [stephenministries.org](http://stephenministries.org) and hear what they have to say. If this helps you realize you might like to have a Stephen Minister to talk to, contact one of our Stephen Leaders John Conklin, Judy Cutler, or Rev. Bill Carter.



Please note that there are still openings available on the 2016 flower calendar posted in the hallway next to Rev. Carter's office.

## ARCHIVES

Did you misplace your latest Presbyterian? Do you want to see the bulletin for Sunday? Did you know you can find old bulletins and Presbyters on the FPC website?

Check out <http://www.fpccs.org/links/archives.html> for the last three year's bulletins, Annual Reports, and Presbyters, plus selected historical items.

Here you can find the church's first newsletter, bulletins from the installation of various pastors, and other interesting information. Have some comments or ideas? Contact the webmaster at [webmaster@fpccs.org](mailto:webmaster@fpccs.org).



First Presbyterian Church has a Lending Library in the Session Room (206). There are many shelves containing books in every category, fiction, non-fiction, resources, including sermons, poetry, a children's collection, travel, and more.

The library features books from Bill Carter's collection. Various subjects are color coded.

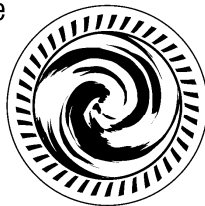
Checking out books is easy and returns have no particular deadline.

A special thank you to Jeanne Comly and Jana Schillinger who have made a computer list of the collection.



# SHAVING CREAM EARTH

God created this wonderful world and told us to care for it. Remember that by making a unique painting.



**What you need:**

- A cookie sheet
- White shaving cream
- A wooden craft stick
- Paint (blue and green)
- A straw
- A paper plate

**What you do:**

1. On the cookie sheet, spray shaving cream in a circle (the same size as the bottom of the paper plate). Smooth it out with the craft stick.
2. Squirt the blue and green paint on top of the shaving cream in loopy, squiggly patterns. Swirl the paint around with the straw.
3. Place the bottom of the paper plate on top of the paint. Press it down gently so the whole plate bottom is covered in paint.
4. Lift up the plate and gently remove excess shaving cream with the stick.
5. After the painting dries, hang it on your wall.



## A SPECIAL GIFT

Give thanks to God for this amazing planet, which he filled with people, animals and plants.

*Directions: Following the code below, fill in the blanks to complete the Bible verse. Then color the earth.*

1 2 3 4 5 6 7 8 9 10 11 12 13 14 15 16 17 18 19 20 21 22 23 24 25 26  
 A B C D E F G H I J K L M N O P Q R S T U V W X Y Z



The \_\_\_\_\_ is \_\_\_\_\_, \_\_\_\_\_, and \_\_\_\_\_, the \_\_\_\_\_, and \_\_\_\_\_ 24:1, NIV

5 1 18 20 8      20 8 5      12 15 18 4 19  
 5 22 5 18 25 20 8 9 14 7      9 14      9 20  
 23 15 18 12 4      1 12 12      23 8 15      12 9 22 5  
 9 14      9 20      16 19 1 12 13

Answer: The earth is the LORD's, and everything in it, the world, and all who live in it. Psalm 24:1, NIV

## Joys and Sorrows



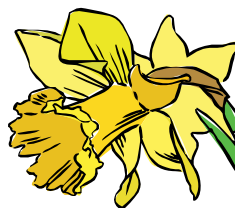
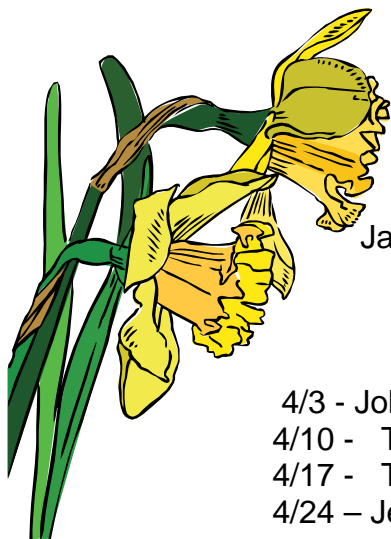
The Church has been notified of the passing of Don Lodwick, husband of former long-time member Barbara Lodwick. Our condolences to Barbara and her family.

Sympathy of the congregation to Audrey Newman and family upon the loss of her brother, Larry Salkeld.



Char and Fred Lyon will be 50-year members of the First Presbyterian Church on April 7, 2016.

Their son and daughter, Fred Jr. and Char-Anne began attending the church in 1966 at the ages of 9 and 3 and later became members.



**April Ushers:**

Jack Pittman, Vi Dygert

**April Welcomers:**

- 4/3 - John Conklin
- 4/10 - TBD
- 4/17 - TBD
- 4/24 – Jeanne Comly, Linda Young

## Lectionary Readings

**April 3: 2<sup>nd</sup> Sunday of Easter**  
 Acts 5:27-32; Psalm 150;  
 Revelation 1:4-8; John 20:19-31

**April 10: 3<sup>rd</sup> Sunday of Easter**  
 Acts 9:1-6(7-20); Psalm 30;  
 Revelation 5:11-14; John 21:1-19

**April 17: 4<sup>th</sup> Sunday of Easter**  
 Acts 9:36-43; Psalm 23;  
 Revelation 7:9-17; John 10:22-30

**April 24: 5<sup>th</sup> Sunday of Easter**  
 Acts 11:1-18; Psalm 148;  
 Revelation 21:1-6; John 13:31-35





**FIRST PRESBYTERIAN CHURCH**

300 School Street  
Clarks Summit, PA 18411-1536

Nonprofit Org.  
U.S. Postage  
Permit No. 30  
**P A I D**  
Clarks Summit PA

**DATED MATERIAL**

**Return Service Requested**

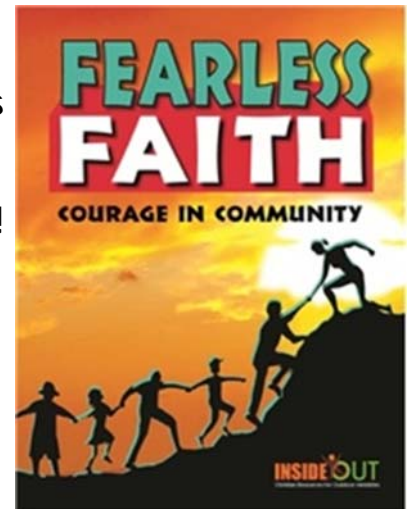


**April is Food Pantry Month!** We collect for the AEM food pantry twice a year and they could really use our help as the pantry has seen an increase in need, serving 65-70 local families. ALL donations of non-perishable items (e.g. soup, pasta and pasta sauce, peanut butter) will be gratefully accepted, but the pantry especially needs: Powdered Milk, Canned meat (including chili, raviolis, SpaghettiO's), Tuna. Please bring items to the narthex any time during the month of April. Thank you for your continuing generosity.

Registration for  
Camp Lackawanna's  
Summer 2016

season is now open!  
(Numbers show grades campers will enter in the fall.)

Visit [www.presbycamplackawanna.org](http://www.presbycamplackawanna.org) or call the Lackawanna Presbytery office at 570-348-0643 for camp descriptions, more information and forms.



*Camp Lackawanna is a Christian camp located in the Endless Mountains along the beautiful Susquehanna River. Our camp provides children a safe place to make friends, explore nature, and grow closer to God. Our programs are*



*open to all faiths and denominations, and campers are welcomed without discrimination.*

# April 2016

## Monthly Planner

Sunday	Monday	Tuesday	Wednesday	Thursday	Friday	Saturday																																																																																																	
<table border="1"> <tr><td colspan="7">Mar 2016</td></tr> <tr><td>S</td><td>M</td><td>T</td><td>W</td><td>T</td><td>F</td><td>S</td></tr> <tr><td></td><td>1</td><td>2</td><td>3</td><td>4</td><td>5</td><td></td></tr> <tr><td>6</td><td>7</td><td>8</td><td>9</td><td>10</td><td>11</td><td>12</td></tr> <tr><td>13</td><td>14</td><td>15</td><td>16</td><td>17</td><td>18</td><td>19</td></tr> <tr><td>20</td><td>21</td><td>22</td><td>23</td><td>24</td><td>25</td><td>26</td></tr> <tr><td>27</td><td>28</td><td>29</td><td>30</td><td>31</td><td></td><td></td></tr> </table>		Mar 2016							S	M	T	W	T	F	S		1	2	3	4	5		6	7	8	9	10	11	12	13	14	15	16	17	18	19	20	21	22	23	24	25	26	27	28	29	30	31			<table border="1"> <tr><td colspan="7">May 2016</td></tr> <tr><td>S</td><td>M</td><td>T</td><td>W</td><td>T</td><td>F</td><td>S</td></tr> <tr><td>1</td><td>2</td><td>3</td><td>4</td><td>5</td><td>6</td><td>7</td></tr> <tr><td>8</td><td>9</td><td>10</td><td>11</td><td>12</td><td>13</td><td>14</td></tr> <tr><td>15</td><td>16</td><td>17</td><td>18</td><td>19</td><td>20</td><td>21</td></tr> <tr><td>22</td><td>23</td><td>24</td><td>25</td><td>26</td><td>27</td><td>28</td></tr> <tr><td>29</td><td>30</td><td>31</td><td></td><td></td><td></td><td></td></tr> </table>		May 2016							S	M	T	W	T	F	S	1	2	3	4	5	6	7	8	9	10	11	12	13	14	15	16	17	18	19	20	21	22	23	24	25	26	27	28	29	30	31					1	2
Mar 2016																																																																																																							
S	M	T	W	T	F	S																																																																																																	
	1	2	3	4	5																																																																																																		
6	7	8	9	10	11	12																																																																																																	
13	14	15	16	17	18	19																																																																																																	
20	21	22	23	24	25	26																																																																																																	
27	28	29	30	31																																																																																																			
May 2016																																																																																																							
S	M	T	W	T	F	S																																																																																																	
1	2	3	4	5	6	7																																																																																																	
8	9	10	11	12	13	14																																																																																																	
15	16	17	18	19	20	21																																																																																																	
22	23	24	25	26	27	28																																																																																																	
29	30	31																																																																																																					
<b>3</b> 10:00 AM Worship  11:00 AM Congregational Meeting	<b>4</b> 12:00 PM Weight Watchers  5:45 PM "Worship through Service Day" info session.  7:00 PM Mission & Justice	<b>5</b> 12:00 PM PW State Hospital Luncheon  5:00 PM Camp Meeting	<b>6</b> 10:00 Prayer & Share  5:00 Light Supper 5:30 Chapel 6:15 The W.A.Y. 7:15 Adult Choir 8:30 Bell Choir	<b>7</b> 8:30 AM Mens' Breakfast  4:30 PM Staff Meeting  5:00 PM Counseling Support Group  7:00 PM Building & Grounds  7:00 PM Christian Education	<b>8</b> 8:15 PM Youth Event: Cosmic Bowling	<b>9</b> 9:00 AM Adopt-A-Highway clean up																																																																																																	
<b>10</b> 10:00 AM Worship  11:00 AM Potluck Lunch	<b>11</b> 12:00 PM Weight Watchers  6:30 PM Worship, Music & Arts	<b>12</b> 10:00 AM MBK Quilts  7:00 PM Session Chair Meeting	<b>13</b> 10:00 Prayer & Share  1:00 LP COM 5:00 Light Supper 5:30 Chapel 6:15 The W.A.Y. 7:15 Adult Choir 8:30 Bell Choir	<b>14</b> 5:00 PM Counseling Support Group	<b>15</b> Presbyter Deadline	<b>16</b>																																																																																																	
<b>17</b> 10:00 AM Worship  4:00 PM Arts: Al Hamme's Swing Street Jazztet	<b>18</b> 12:00 PM Weight Watchers	<b>19</b> PW Circles: 10AM, 1:30PM & 7PM	<b>20</b> 10:00 Prayer & Share  5:00 Light Supper 5:30 Chapel 6:15 The W.A.Y. 7:15 Adult Choir 8:30 Bell Choir	<b>21</b> 8:30 AM Mens' Breakfast  5:00 PM Counseling Support Group  6:30 PM Fellowship	<b>22</b> 6:30 PM Youth Fellowship: Iron Chef	<b>23</b>																																																																																																	
<b>24</b> 10:00 AM Worship  11:00 AM Table Talk  3:00 PM recital	<b>25</b> 12:00 PM Weight Watchers	<b>26</b> 10:00 AM MBK Quilts  7:00 PM Deacons	<b>27</b> 9:00 AM Presbyter  10:00 Prayer & Share  5:00 Light Supper 5:30 Chapel 6:15 The W.A.Y. 7:15 Adult Choir NO BELLS	<b>28</b> 5:00 PM Counseling Support Group  7:00 PM FPC Book Group	<b>29</b>	<b>30</b>																																																																																																	